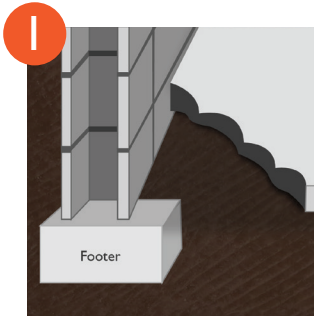
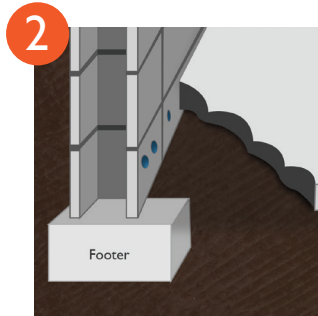


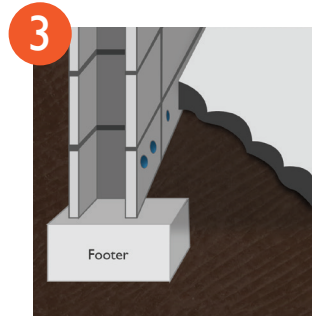
# QUIKFLO INSTALLATION GUIDE



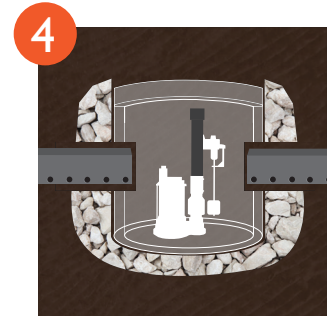
Break and remove foundation floor 8–12 inches from foundation wall, exposing the top of the footer.



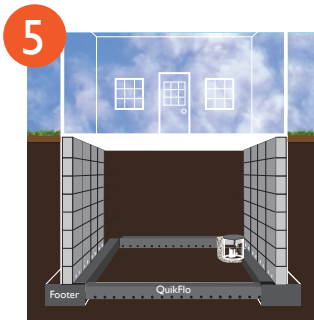
Drill weep holes into empty cells of block wall 1/2"–1" above footer.



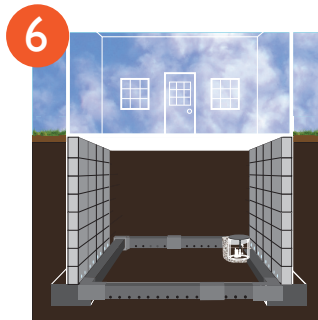
Clear footing of all mud, dirt and debris and create a shallow trench next to footer for QuikFlo.



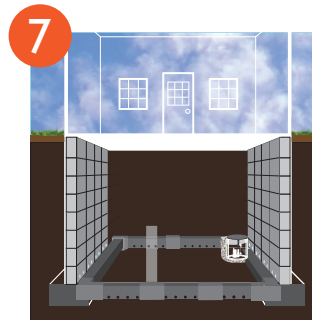
Install sump basin in desired location and cut holes for QuikFlo pipe to enter.



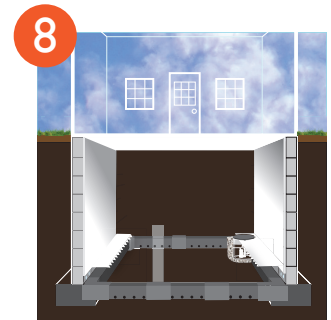
Starting at the basin, lay sections of QuikFlo pipe next to the footer. QuikFlo should be flush with the top of the footer.



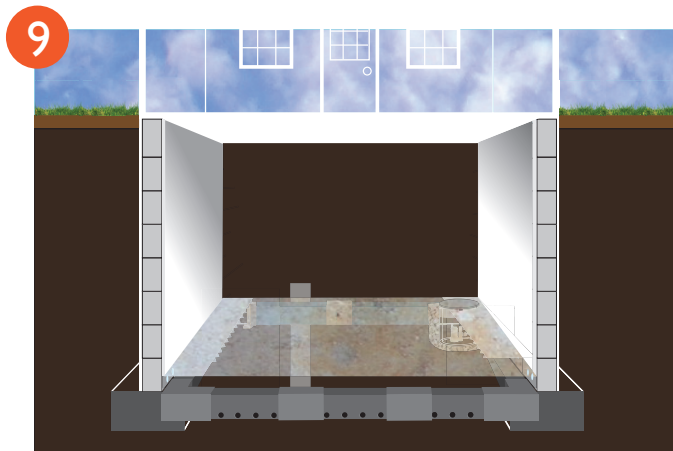
Use couplings and corners as necessary.



(OPTIONAL) Install clean-out port on opposite side of basin and attach 4" Schedule 40 PVC elbow & pipe to the clean out adapters.

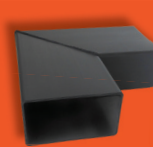


Install a diverter product on top of footer & QuikFlo pipe. Polydrain is recommended for use with QuikFlo.

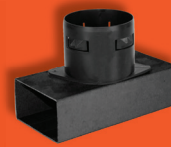


Pour concrete over diverter to replace floor. Take care to avoid pouring into clean-outs. Finish as needed.

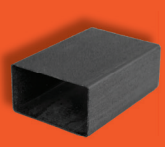
Images are not drawn to scale, but emphasized for visual comprehension. For additional support, please contact Richtech Industries, 800.677.7791 for assistance with a product.



CORNER



CLEAN-OUT



CONNECTOR



QUIKFLO

\* If using gravel with QuikFlo, make sure the stone is larger than the QuikFlo holes \*

A RICHTECH INDUSTRIES PRODUCT | RICHTECH INDUSTRIES

RICHTECH INDUSTRIES ONLY SELLS TO PROFESSIONAL CONTRACTORS | CALL US 800.677.7791