

PITBOSS

ALL CAST IRON SUMP PUMP

**CAST IRON
SUBMERSIBLE
SUMP PUMP**

INSTALLATION AND OPERATING INSTRUCTIONS

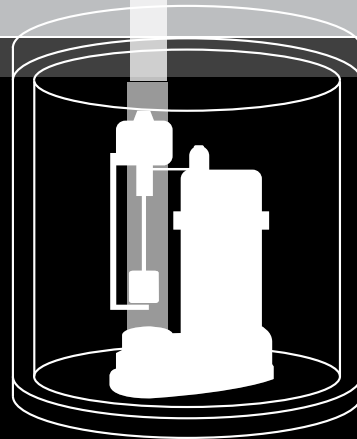
A RICHTECH INDUSTRIES PRODUCT

RICHTECH INDUSTRIES



PUMP PERFORMANCE

15' LIFT	2900 GALLONS/HR
10' LIFT	3400 GALLONS/HR
5' LIFT	3900 GALLONS/HR



SPECIFICATIONS

Power Supply Requirements	115 VAC, 60Hz
Motor Amp Rating	5.6 Amp Single Phase – Insulating Oil Filled
Liquid Temperature Range	40°F to 120°F
Circuit Requirements	15 Amp (Minimum)
Discharge	1 1/2" NPT
Minimum Basin Diameter	10" Diameter

IMPORTANT!

READ ALL INSTRUCTIONS CONTAINED IN THIS MANUAL BEFORE USING THIS PRODUCT.

Save these instructions for future reference. Failure to read and follow the warnings and instructions within this instruction manual could result in property damage, serious injury or death.

SAFETY FIRST!

This instruction manual contains very important information for you to know and understand. This information is provided for your safety and to help prevent equipment problems from occurring. Please observe all safety information labeled danger, warning, caution, and notice.



WARNING

WARNING INDICATES A POTENTIALLY HAZARDOUS SITUATION WHICH, IF NOT AVOIDED, COULD RESULT IN DEATH, SERIOUS INJURY OR MAJOR PROPERTY DAMAGE.

RISK OF ELECTRIC SHOCK. TO REDUCE THIS RISK, OBSERVE THE FOLLOWING WARNINGS:

WARNING! To reduce the risk of electrical shock, this pump must be properly grounded in accordance with the National Electric Code (NEC) and all applicable state and local codes and ordinances. The receptacle should be protected with a Ground Fault Circuit Interrupter (GFCI).

WARNING! To reduce the risk of electrical shock, always disconnect the pump from the power source **BEFORE** handling or servicing.

WARNING! Never remove the ground prong from the plug, or use an adapter that eliminates the ground prong.

WARNING! Never plug this pump into an electric outlet while standing on a wet surface.

WARNING! Cable should be protected at all times to avoid punctures, cuts and abrasions that may result in exposed wiring. Never handle connected power cords with wet hands.

WARNING! This Submersible Sump Pump has not been investigated for use in or around swimming pools, marine areas, recreational water installations, decorative fountains or any installation where human contact with the pumped fluid is common.

WARNING! Do not use an extension cord. Extension cords could present a safety hazard if not properly sized, become damaged or the connection falls into the sump pit.



RISK OF EXPLOSION. TO REDUCE THIS RISK, OBSERVE THE FOLLOWING WARNINGS:

WARNING! Do not use to pump flammable or explosive liquids such as gasoline, fuel oil, kerosene, etc.

WARNING! Do not use in a flammable or explosive atmosphere.

NOT SUITED FOR POTABLE WATER APPLICATIONS.

WARNING! Do not use this pump to transfer water that will be used for potable (drinking) water. This pump is only to be used in applications for which it is designed.



CAUTION

CAUTION INDICATES A POTENTIALLY HAZARDOUS SITUATION WHICH, IF NOT AVOIDED, MAY RESULT IN MINOR INJURY OR PROPERTY DAMAGE.

TO REDUCE THE RISK OF HAZARDS THAT CAN CAUSE INJURY OR PROPERTY DAMAGE, OBSERVE THE FOLLOWING WARNINGS:

CAUTION! Do not block or restrict discharge hose. Discharge hose may whip under pressure. It is strongly recommended to use rigid piping and fittings to secure the pump in the sump basin to reduce movement.

CAUTION! Do not install the pump if it has been damaged in any way.

CAUTION! Do Not carry or lift the pump by the power cord. Use the pump's lift ring.



INSTALLATION

1. Set the pump on a solid, level surface in the bottom of the sump pit. If necessary, use bricks / blocks to provide a solid base. Avoid placing the pump on loose gravel, earth or sand.
2. Install discharge plumbing according to state and local codes. It is highly recommended that rigid PVC is used for the discharge line. Installing a union in the discharge line will make it easier to remove the sump pump for maintenance. The discharge line must be sloped downward away from the foundation to ensure that the water properly drains away and that the discharge line will not freeze during cold spells.
3. Install a check valve in the discharge line. The check valve may be positioned just above the sump basin for ease of service and/or replacement.
4. Assemble switch to the discharge line using the attached hose clamp. Position the switch so that when the float is at its lowest position it is at least 3" above the base of the pump (just above the inlet). Make sure that the switch is positioned where the float can move up and down freely.
5. Secure all power cords and switch cords to the discharge pipe using cable ties to prevent switch entanglement.
6. This pump uses a "piggyback" type switch to allow for the easy removal and replacement of the switch and to aid in troubleshooting switch / pump problems. Plug the pump into the back of the switch plug.
7. Plug the switch into a ground fault circuit interrupter (GFCI) protected outlet.
8. Fill the sump basin with water until the float rises and starts the pump cycle. The pump will stop when the water level falls to the switch's off position. Repeat this several times to ensure proper operation and that the switch operates freely.
9. Install the sump basin gasket / cover.

NOTICE

This pump is not designed to handle salt water, brine, laundry discharge, water softener discharge or any other application which may contain caustic chemicals. Damage to the pump may occur and will void the pump's warranty.

TROUBLESHOOTING



CAUTION! Always disconnect the pump from the electrical power source BEFORE handling or servicing.

PROBLEM	POTENTIAL CAUSE	POSSIBLE SOLUTION
Pump Will Not Run	<ol style="list-style-type: none"> 1. Blown fuse, tripped breaker or tripped GFCI 2. Low Line Voltage 3. Switch obstructed 4. Insufficient water level 5. Motor Failure 6. Switch Failure 	<ol style="list-style-type: none"> 1. Check all electrical connections. Check for blown fuses, tripped GFCI or tripped circuit breaker. 2. Contact a licensed electrician. 3. Remove obstruction and check for free movement. 4. Water needs to rise to a level that activates the switch 5. Replace switch
Pump Cycles too frequently	<ol style="list-style-type: none"> 1. Switch Failure 2. Check valve not present or not operating properly 	<ol style="list-style-type: none"> 1. Replace switch 2. Install or replace the check valve
Pump Shuts off and turns on independent of switch (trips thermal overload protector). CAUTION! Pump may start unexpectedly. Disconnect power supply.	<ol style="list-style-type: none"> 1. Low line voltage 2. Impeller jammed, worn or damaged 3. Inlet blocked or discharge blocked 4. Excessively high water temperature entering the sump pit 	<ol style="list-style-type: none"> 1. Contact a licensed electrician. 2. Replace Impeller. 3. Clean pump inlet. Check and remove any obstructions from the pump discharge line. 4. Pump should not be used for water above 120° F
Pump runs continuously	<ol style="list-style-type: none"> 1. Switch failure 2. Switch obstructed 3. Inlet blocked or discharge blocked 4. Excessive inflow or pump not properly sized 	<ol style="list-style-type: none"> 1. Replace switch 2. Remove obstruction and check for free movement. 3. Clean pump inlet. Check and remove any obstructions from the pump discharge line. 4. Recheck all sizing calculations to determine proper size
Pump operates noisily or vibrates excessively	<ol style="list-style-type: none"> 1. Impeller obstructed or damaged 2. Piping attachments too rigid or too loose to building structure 	<ol style="list-style-type: none"> 1. Clean and / or replace impeller 2. Install a rubber coupling to isolate pump vibration for discharge line.
Pump runs but delivers insufficient capacity	<ol style="list-style-type: none"> 1. Low line voltage 2. Impeller obstructed, worn or damaged 3. Inlet blocked or discharge blocked 4. Pump undersized for application 5. Check valve stuck closed or installed backwards 	<ol style="list-style-type: none"> 1. Contact a licensed electrician 2. Clean and / or replace impeller 3. Clean pump inlet. Check and remove any obstructions from the pump discharge line. 4. Recheck all sizing calculations to determine proper size 5. Remove and examine check valve for proper installation and free operation

Richtech Industries Three Year Limited Warranty

Richtech Industries (“Richtech”) offers this three (3) year limited warranty as the only warranty, express or implied regarding Richtech’s PitBoss All Cast Iron Sump Pump and is a three year limited warranty against defects in workmanship and material only. This warranty does not apply to faulty installation, modification, misuse, or alteration of the product and requires that the product be used solely in single family residential applications. This warranty is effective for three years from the date of installation. Richtech will repair or replace at its option for the original purchaser any part or parts of its PitBoss All Cast Iron Sump Pump found by Richtech to be defective in material or workmanship. This is the sole and exclusive remedy and any and all liability for any and all other damages, costs or expenses whatsoever is specifically excluded. This warranty shall also serve as your waiver of subrogation of all claims against Richtech and in no event shall Richtech or its suppliers be liable for any special, consequential, or other damages. Should Richtech find return of the product necessary, all packing and shipping costs will be the responsibility of the customer.

Please contact Richtech at Richtech Industries, 34000 Lear Industrial Parkway, Avon, Ohio 44011, (800) 677-7791 or www.richtechindustries.com. You must provide a copy of your purchase receipt in order to exercise this warranty to verify your date of installation. Call Richtech for return instructions. All claims related to alleged breach of this limited warranty shall be brought in the Lorain County, Ohio Court of Common Pleas. This limited warranty gives certain legal rights and you may have other rights that may vary from state to state.

NOTES:

Installer: _____

Serial Number: _____

Date of Installation: _____

86054-01