

QUIKJET

Clean-Out Drainage Pipe

QuikJet Clean-Out Drainage Pipe is a new product from Richtech that features jet spray "nozzles" within the pipe for easy clean-out services.

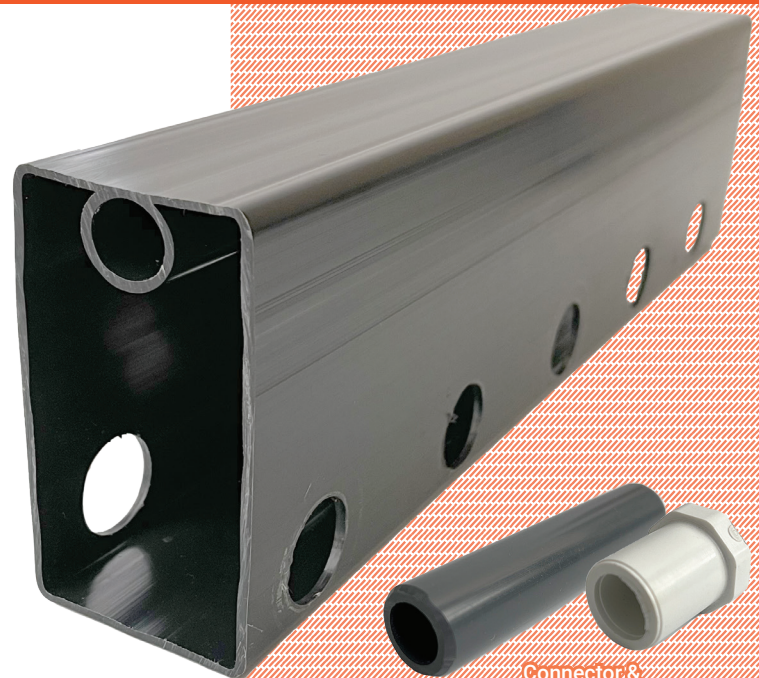
The pipe and 90° corner piece feature a nested 11/16" diameter pipe along the top of the interior wall with perforations every 8".

Use PVC cement to create a closed system with the connectors, end cap, and hose barb.

When a hose is attached to the hose barb, the closed system becomes pressurized and the perforations create a jet spray of water along the length of the system.

The result is a strong, downward jet stream every 8" that flushes away sediment and debris.

- Combines vertical ("Tall-Face") QuikFlo pipe with a new integrated clean-out system
- Attach a hose to one end of the complete QuikJet system to clean out dirt and debris
- PVC cemented connectors and end cap create a pressurized clean-out system
- Eliminates unsightly traditional clean-out ports in completed waterproofing jobs
- Connectors feature beveled edges for easy insertion
- Water inlet holes are 1"



Connector &
End Cap

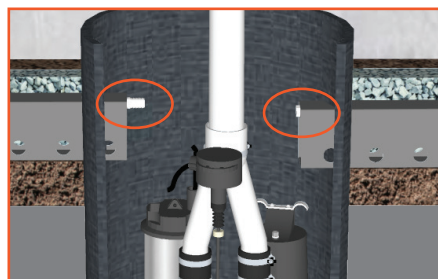


Connector with
90° Corner



End Cap with
90° Corner

Item #	Description
QJ10496	Pipe, 8' Length
QJ04CNR	90° Corner
QJ04CAP	Clean Out End Cap
QJ04CON	Connector
QJ04BRB	Hose Barb



Basin with hose barb on one end
and end cap on the other.



Cutaway view of QuikJet with water
spraying away debris.