

AN
OVERVIEW
OF THE

QUIKFLO

ADVANCED
DRAINAGE
SYSTEM

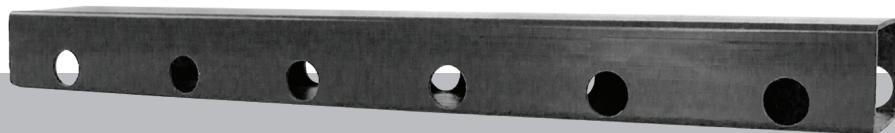
QuikFlo is an advanced drainage product designed specifically for interior foundation waterproofing. Utilizing air space, QuikFlo minimizes gravel needed, installs faster and drains the maximum amount of water in silt, sand and clay soils. The design collects water from under the floor slab and channels it into the basin.



RICHTECH INDUSTRIES 800.677.7791 | RICHTECHINDUSTRIES.COM

– RICHTECH INDUSTRIES ONLY SELLS TO PROFESSIONAL CONTRACTORS –

A complete line of QuikFlo fittings allows the installer to quickly and easily design and piece together a system that will channel water into the sump basin, relieving hydrostatic pressure against the foundation.



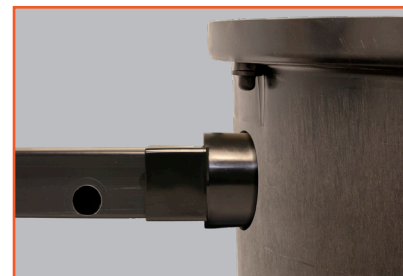
Horizontal:

Placing QuikFlo horizontally, next to the footer, allows you to dig a shallow trench, which minimizes manual labor.

Vertical:

Placing QuikFlo vertically, next to the footer, allows for deeper penetration specifically for homes with serious hydrostatic pressure.

5/8", 3/4" and 1" diameter custom holes available. Specify size when ordering.



Skip the rectangular cut! The Basin Adapter allows you to use a hole saw to cut into the basin wall.



New Quad-Cut Pipe is available! Two rows of 5/8" diameter holes on each side will extend the life of the drainage system by ensuring flow even during sediment buildup.



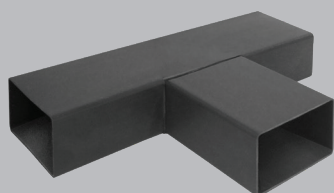
90 Degree Corner



45 Degree Corner



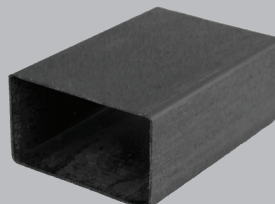
Clean Out Port



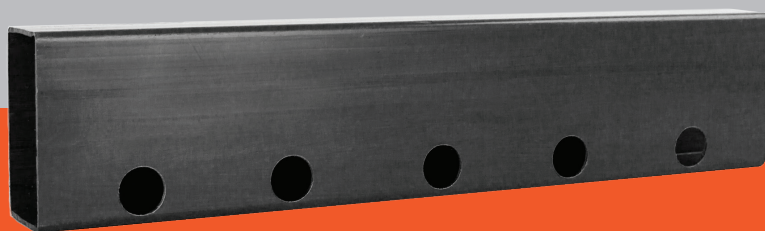
T-Connector



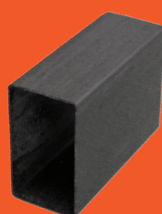
Basin Adapter



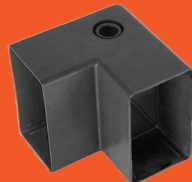
Connector



Clean Out Port



Connector



90 Degree Corner



Basin Adapter