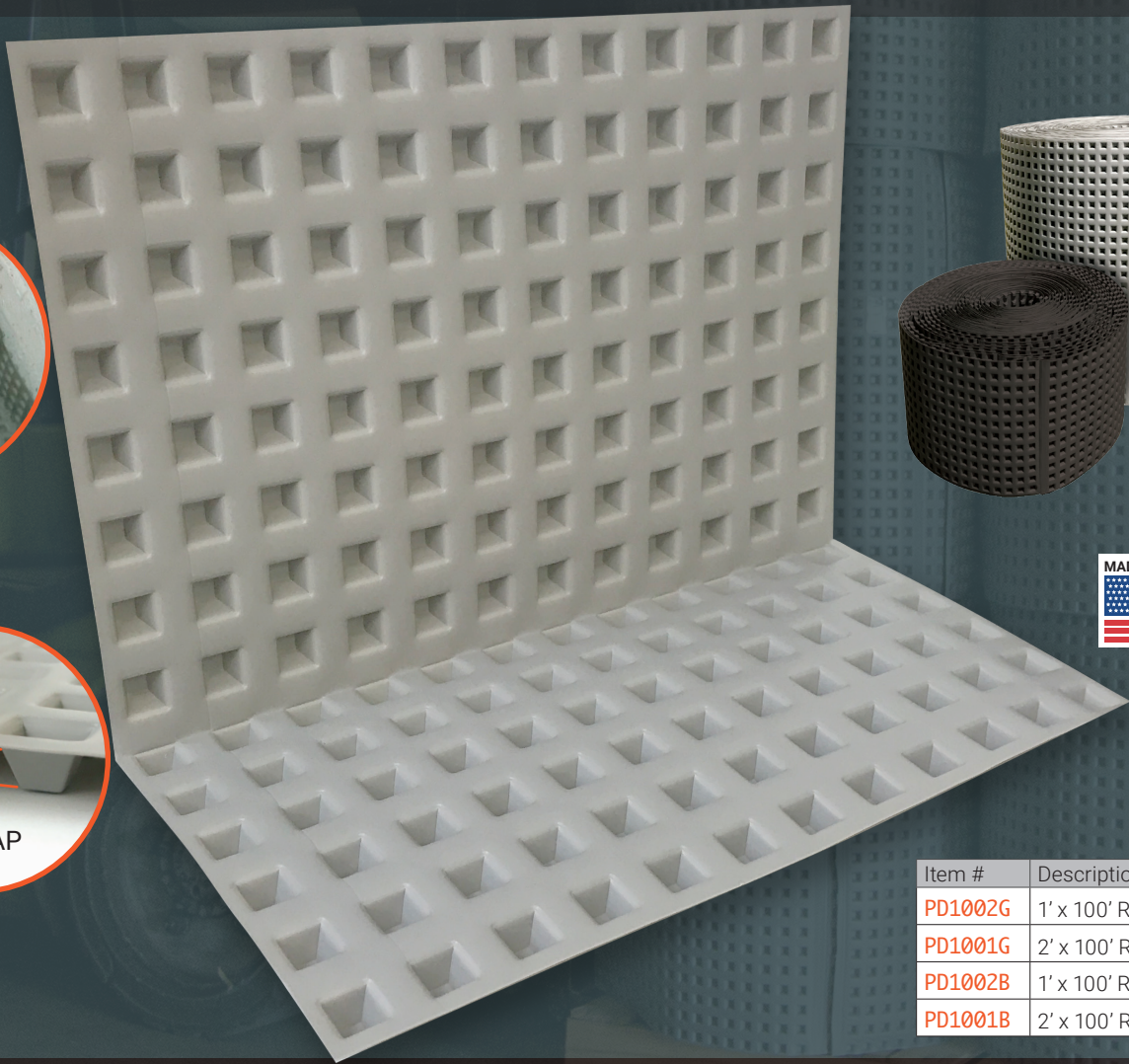
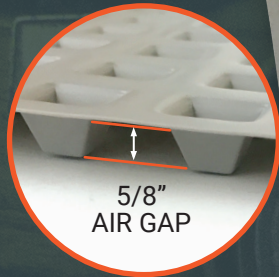
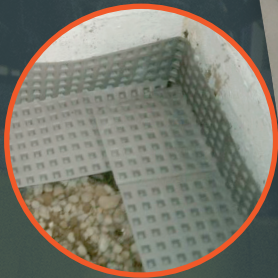


POLYCOVE

A RICHTECH INDUSTRIES PRODUCT

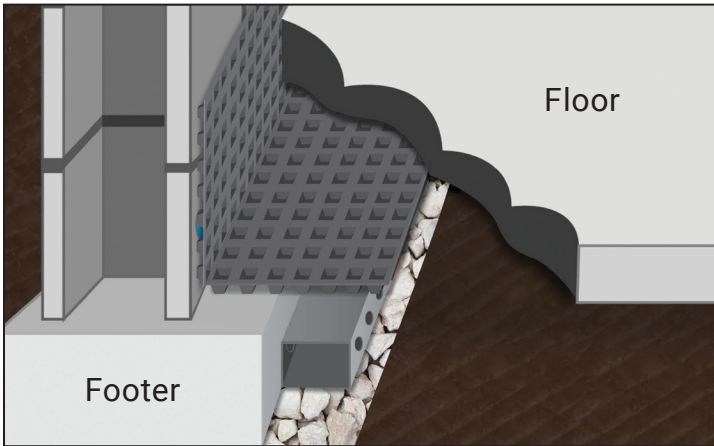
- INCREASES WATER INTO DRAIN SYSTEM
- ELIMINATES SWEATING OF CONCRETE
- HEAVY DUTY CONSTRUCTION GRADE MATERIAL
- ALLOWS THICKER REPLACEMENT FLOOR
- EXCELLENT FOR THIN FLOORS AND HIGH FOOTERS



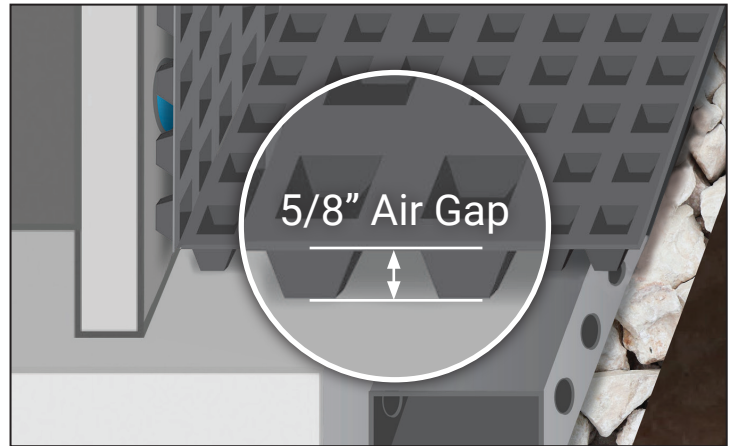
Item #	Description
PD1002G	1' x 100' Roll, Gray
PD1001G	2' x 100' Roll, Gray
PD1002B	1' x 100' Roll, Black
PD1001B	2' x 100' Roll, Black

PolyCove uses Air-Gap Technology to increase water drainage and help restore the foundation floor to its original thickness. The design maintains a 5/8" gap between the footer and replacement slab, creating a waffle pattern that channels the water below and supports the concrete above. PolyCove is laid directly onto the footer and extends over the drain system. Eliminating gravel on the footer boosts water flow by removing resistance. By extending PolyCove up the wall, the weep holes are protected and any moisture from the foundation wall is channeled into the drainage system. PolyCove is made from Ultra-High Molecular Weight (UHMW) thermoplastic, and can be bent and folded as needed with no cracking.

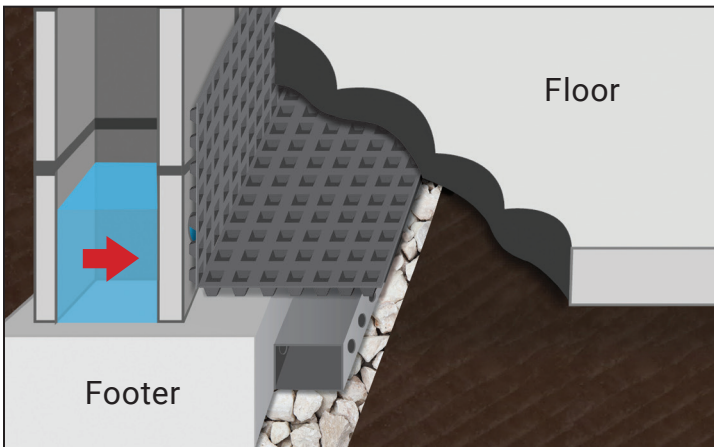
PolyCove uses Air-Gap Technology to increase water drainage and help restore the foundation floor to its original thickness.



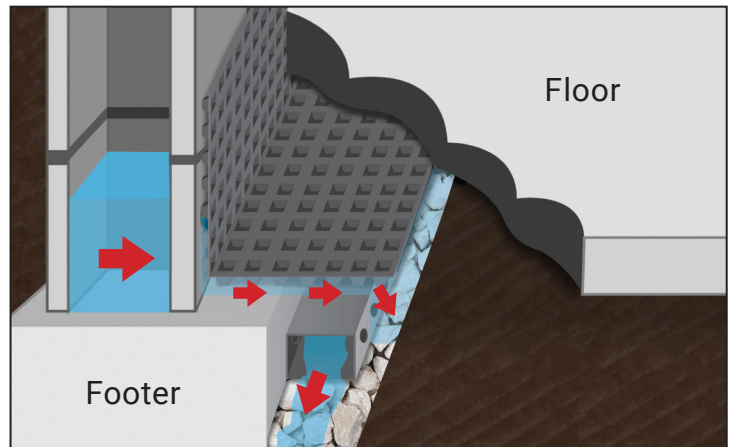
PolyCove is laid directly onto the footer and extends over the drain system.



PolyCove maintains a 5/8" Air Gap between the footer and the replacement slab.



By extending PolyCove up the wall, the weep holes are protected and any moisture from the foundation wall is channeled into the drainage system.



Eliminating gravel on the footer boosts water flow by removing resistance.



A waterproofing job where PolyCove wasn't used and the concrete replacement floor blocked the weep holes in the wall.



Without PolyCove, moisture can wick through the concrete and condensation puddles will form on the new floor.