

AN  
OVERVIEW  
OF THE

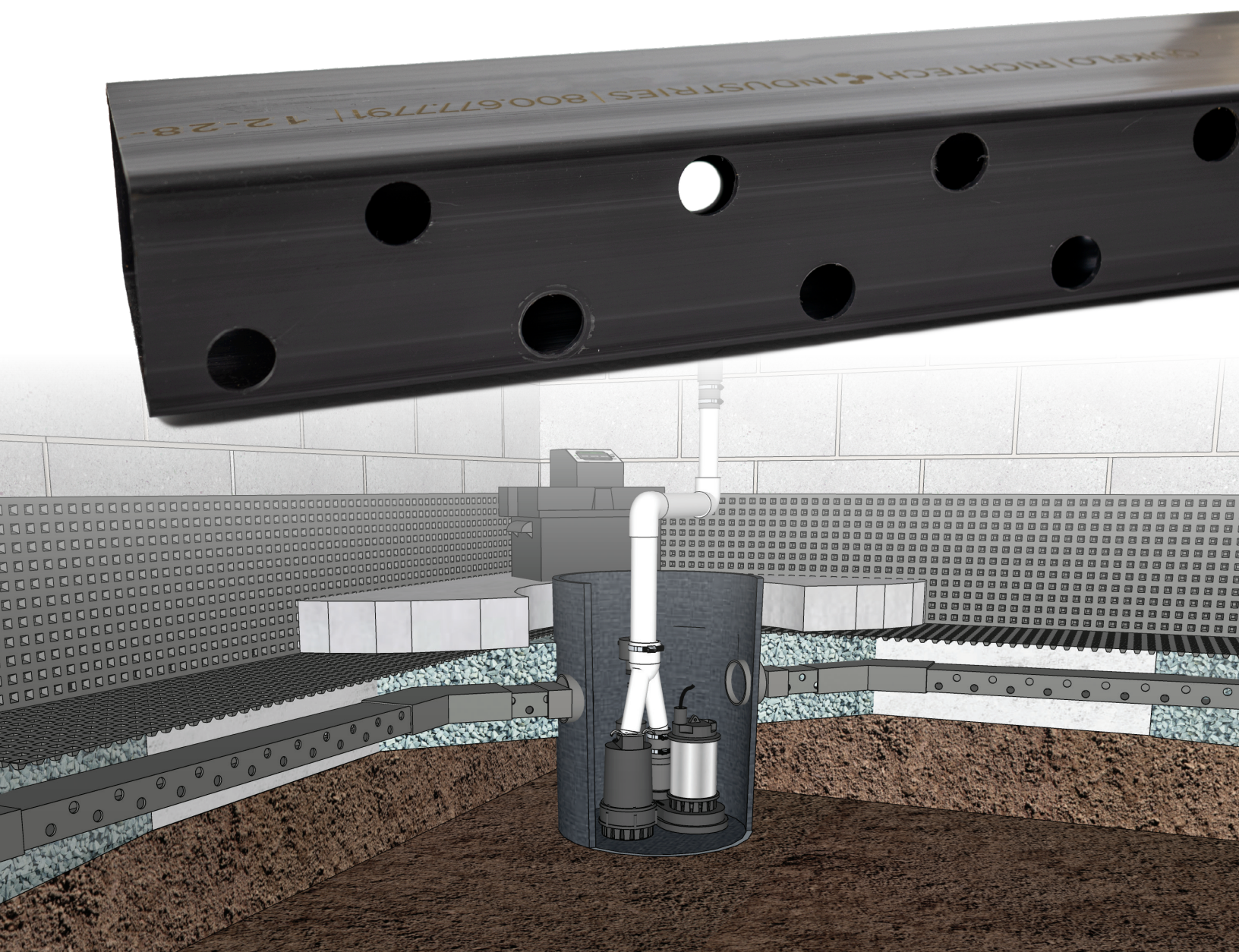
# QUIKFLO

ADVANCED  
DRAINAGE  
SYSTEM

## QUAD-CUT QUIKFLO PIPE LASTS LONGER

**Now available in Quad-Cut configuration!** Holes drilled at the top and bottom on both sides of the pipe allow water to drain even as sediment builds over time.

- Designed specifically for foundation waterproofing
- Installs faster and drains the maximum amount of water in silt, sand and clay soils
- Uses air space to minimize gravel
- Collects water from under the floor slab and channels it into the basin.

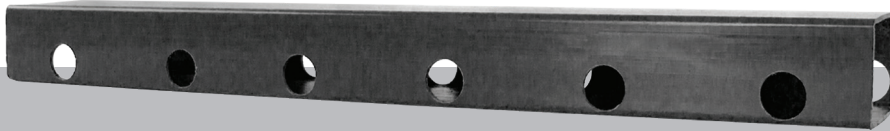


AN  
OVERVIEW  
OF THE

# QUIKFLO

ADVANCED  
DRAINAGE  
SYSTEM

A complete line of QuikFlo fittings allows the installer to quickly and easily design and piece together a system that will channel water into the sump basin, relieving hydrostatic pressure against the foundation.



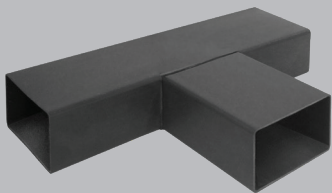
90 Degree Corner



45 Degree Corner



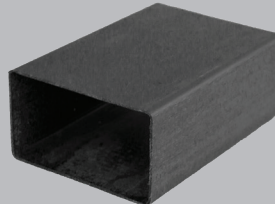
Clean Out Port



T-Connector



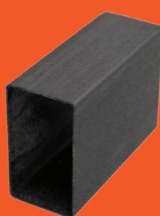
Basin Adapter



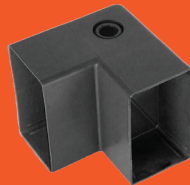
Connector



Clean Out Port



Connector



90 Degree Corner



Basin Adapter

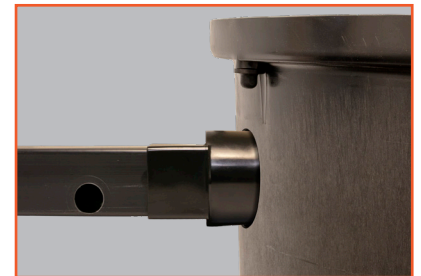
## Horizontal:

Placing QuikFlo horizontally, next to the footer, allows you to dig a shallow trench, which minimizes manual labor.

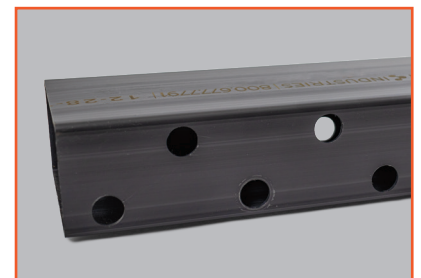
## Vertical:

Placing QuikFlo vertically, next to the footer, allows for deeper penetration specifically for homes with serious hydrostatic pressure.

5/8", 3/4" and 1" diameter custom holes available. Specify size when ordering.



Skip the rectangular cut! The Basin Adapter allows you to use a hole saw to cut into the basin wall.



New Quad-Cut Pipe is available! Two rows of 5/8" diameter holes on each side will extend the life of the drainage system by ensuring flow even during sediment buildup.