

RICHTECH INDUSTRIES

CARBON FIBER SYSTEM

A cost-effective, permanent solution to cracked foundations

Ultimate
Tensile Strength
404,600 psi
(Nearly twice the strength
of other carbon fiber
products)



Kit includes:

(4 or 8) Richtech Carbon Fiber Sheets, Paste Filler, Surface Primer, Bonding Adhesive, (2) 9" roller covers, (1) ribbed roller, (1) spatula, (3) mixing sticks, (2) disposable pan liners

Permanently restores structural integrity to cracked or bowed basement walls

Available in 1' wide and 6" wide sheets

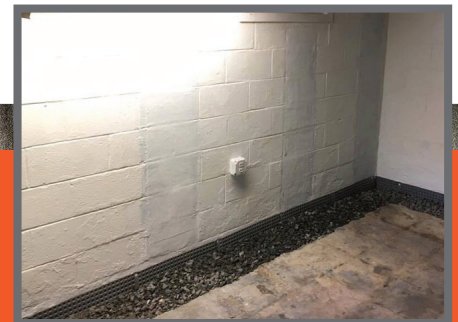
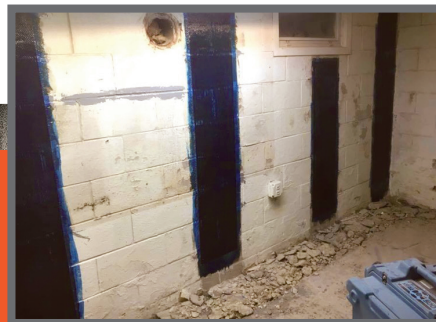
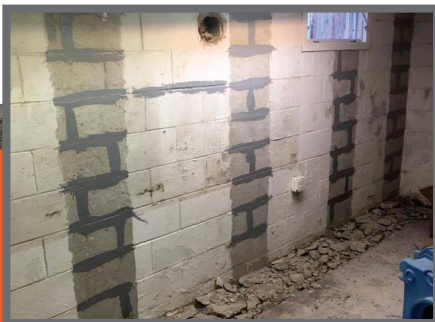
Largest surface area coverage in the market provides more strength

Unidirectional fiber delivers maximum strength to wall

Custom weave pattern with robust edges

Industrial-grade epoxy is stronger than other carbon fiber products

Item #	Description
RICCAR17	1' x 7' (4 Pack)
RICCAR18	1' x 8' (4 Pack)
RICCAR674	6" x 7' (4 Pack)
RICCAR678	6" x 7' (8 Pack)
RICCAR684	6" x 8' (4 Pack)
RICCAR688	6" x 8' (8 Pack)



Industrial grade epoxy is stronger than other carbon fiber products!
Ideal for poured, block and brick walls. For use on cracks or bows up to 2" in total deflection. Can be used on vertical, horizontal, or diagonal cracks.